

CENTER FOR LEADERSHIP & INVOLVEMENT (CfLI)

'23-'24 YEAR IN REVIEW

ABOUT US

WHO WE ARE

The Center for Leadership & Involvement (CfLI) is a department within Student Affairs offering student organization support, leadership development programming, and guidance on co-curricular opportunities. The office registers, advises, and provides support to hundreds of Registered Student Organizations (RSOs) with wide-ranging interests.

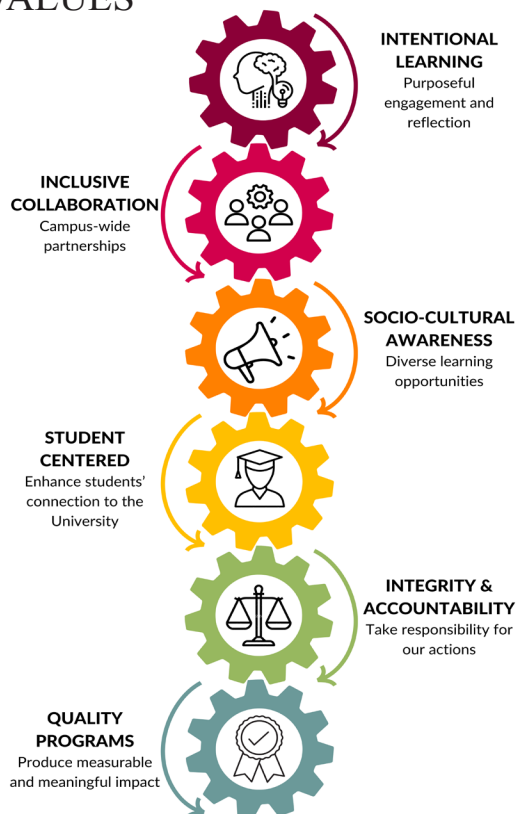
MISSION

To cultivate and engage students through practical leadership skill development and involvement experiences.

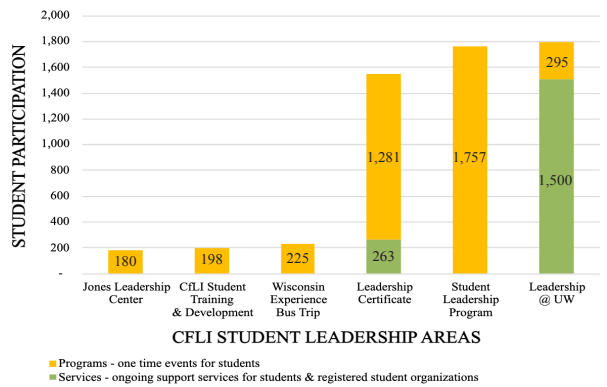
VISION

Aspiring to be the premier center for integrated leadership development and involvement resources for all students.

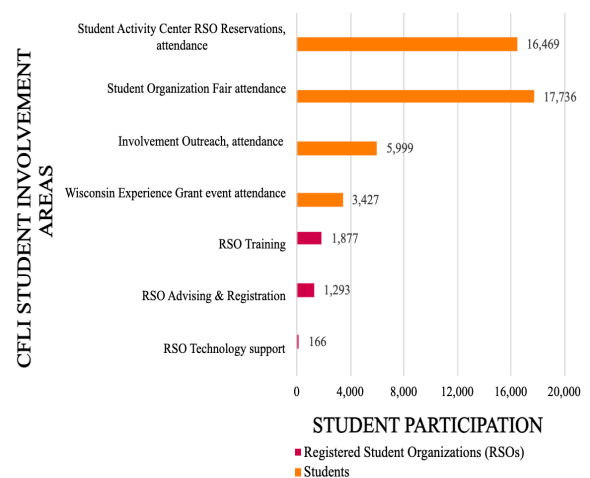
VALUES



LEADERSHIP DEVELOPMENT PROGRAMS & SERVICES



INVOLVEMENT & RSO PROGRAMS & SERVICES



CFLI HIGHLIGHTS

Staff Transitions

- 4 staff vacated positions: Senior Director, Assistant Director of Organization Advising & Technology, Leadership Development Program Specialist, Student Organization Specialist
- Hired 2 Graduate Advisors for SLP and JLC

Assessments

- CfLI co-facilitated Assessment 101 workshops with Student Affairs (SA) for all SA staff
- CfLI assessment collected program and services data, and communicated using program briefs and other methods

CfLI Student Staff Training & Development

- Social Justice workshops on accessibility & neurodiversity for student staff
- Front desk leads trained and support front desk staff

LEADERSHIP PROGRAM HIGHLIGHTS

LEADERSHIP DEVELOPMENT

- Launched the online Leadership Self-Assessment. The platform has been used by 1,500 in FY24
- The UW-Madison Leadership Certificate established 5 new partnerships across campus to better support students in achieving the Leadership Certificate

JONES LEADERSHIP CENTER (JLC)

- Hosted the 2024 Emerging Leaders Retreat at a new location, The UW-Madison Arboretum. 20 students participated and a guest session was led by the Office of Inclusion Education (OIE)
- Organized speaker events to discuss their work with diverse communities

STUDENT LEADERSHIP PROGRAM (SLP)

- Organized the All Campus Leadership Conference (ACLC) with record attendance and high participant satisfaction
- Hosted Michelle Enjoli at the Badger Professional Organizational Management Summit who spoke on being the CEO of your own brand

WISCONSIN EXPERIENCE BUS TRIP (WEBT)

- Received 117 applications, a nearly 100% increase from the previous year
- Visited 7 different locations throughout the state of Wisconsin, including visits to the elders of Oneida Nation to Lambeau Field to the Milwaukee Art Museum

STUDENT ORGANIZATION SUPPORT HIGHLIGHTS

ORGANIZATIONAL & TECHNOLOGY SUPPORT (OATS)

- RSO Resource Open House connected 62 RSO student leaders to campus and community resources
- Increased CfLI website accessibility scores from 72% to 96%
- 2,295 CfLI room reservations made in the Student Activity Center, 16,250 RSO member attendance estimate

STUDENT ORGANIZATION FAIR

- 830 RSOs attended the Student Organization Fairs; 450 attended in the Fall and 380 attended in the Spring
- 17,528 students attended the Student Organization Fairs; 13,320 fall attendees and 4,416 spring attendees
- 1,074 student organizations were successfully registered in FY24

WISCONSIN EXPERIENCE GRANT (WEG)

- WEG funding supported RSO led events, which were free and open to all students
- Allocated ~\$30,000 for 25 WEG-sponsored events, attended by 3,365 students

STUDENT SPOTLIGHT



Ashley DeLaurelle
SLP Intern

“The abundance of learning opportunities within CfLI and SLP have shaped me into a more versatile leader and have allowed me to discover new qualities about myself.”



Britney Patterson
JLC Intern

“What I love working at the JLC is that I get to connect with other students that are passionate about leadership and want to better themselves!”



Olivia Marsden
Marketing Intern

“CfLI has become a second home for me in my 2 years of being a Marketing Intern. I am so grateful to have had this experience at UW-Madison!”